

ALIEN CLEAN UP PROP™

INSTALLATION AND OPERATING INSTRUCTIONS

KEEP ALL PLASTIC AND WIRE PARTS AWAY FROM CHILDREN.

WARNING: DO NOT TURN ON THE PROP UNTIL FULLY ASSEMBLED. STAY CLEAR OF THE PROP WHILE OPERATING.
ESTIMATED ASSEMBLY TIME: 6 MINUTES.

PARTS

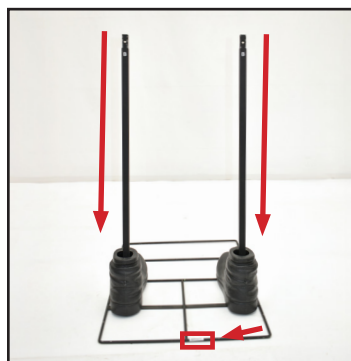


- | | | | | | | |
|------------------|-------------------------|------------------------------|---------------------------|---------------|----------------------------|----------------------|
| 1. METAL BASE | 4. CLOTHING | 6. SPINE FRAME & CONTROL BOX | 8. FOG THROWER WITH HANDS | 10. FOG HOSE | 12. FOG CORD & FOG ADAPTER | 13. 6V 2A DC ADAPTER |
| 2. LEG POLES (2) | 5. WAIST FRAME & MODULE | 7. HEAD & ARMS | 9. STOCK | 11. FOG CLAMP | | |
| 3. BOOTS (2) | | | | | | |

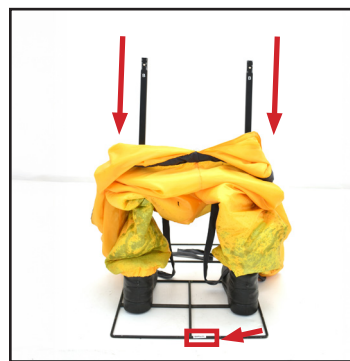
ASSEMBLY



1. Insert and snap lock the LEG POLES into the METAL BASE.
(Match A to A x2)



2. With the back of the SHOES facing the BACK label of the METAL BASE, slide the SHOES over the assembled LEG POLES.



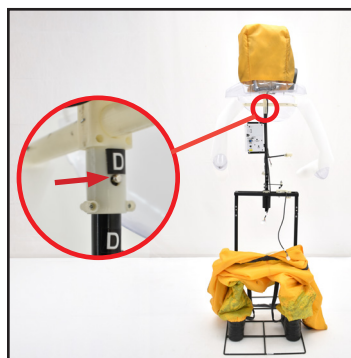
3. With the back of the CLOTHING facing the BACK label of the METAL BASE, slide the CLOTHING'S pant legs over the assembled LEG POLES.



4. Insert and snap lock WAIST FRAME & MODULE into the LEG POLES.
(Match B to B x2)



5. Insert and snap lock the SPINE FRAME & CONTROL BOX into the WAIST FRAME & MODULE.
(Match C to C)



6. Insert and snap lock the HEAD & ARMS into the SPINE FRAME & CONTROL BOX.
(Match D to D)



7. Pull the CLOTHING up and over the shoulders of the HEAD & ARMS as shown in the diagram.
Adjust the SPINE FRAME pole labeled E through the front opening of the CLOTHING.



8. Insert and snap lock the FOG THROWER WITH HANDS into the SPINE FRAME.
(Match E to E)
Feed the FOG THROWER WITH HANDS wire through the front opening of the CLOTHING.

ASSEMBLY



9. Insert and snap lock the left HAND of the FOG THROWER WITH HANDS to the left arm of the HEAD & ARMS.

(Match F to F)

Hook and loop the left sleeve cuff over the left HAND'S wrist.



10. Insert and snap lock the right HAND of the FOG THROWER WITH HANDS to the right arm of the HEAD & ARMS.

(Match G to G)

Hook and loop the right sleeve cuff over the right HAND'S wrist.



11. Feed the STOCK under the right ARM and connect it to the back of the FOG THROWER WITH HANDS.

(Match H to H)

Feed one end of the FOG HOSE under the right ARM and connect it to the back of the FOG THROWER WITH HANDS.



12. Connect all wires to the CONTROL BOX. (Match I to I - Body Motion) (Match J to J - Human Sensor & Head LED) (Match K to K - FOG THROWER LED)

Hook and loop the back of the CLOTHING shut.



13. Crossing the CLOTHING'S straps over one another, hook and loop each one to the CLOTHING'S belt.

FOG MACHINE SETUP

Please follow steps 1 through 13 on the assembly instructions before beginning FOG MACHINE SETUP:

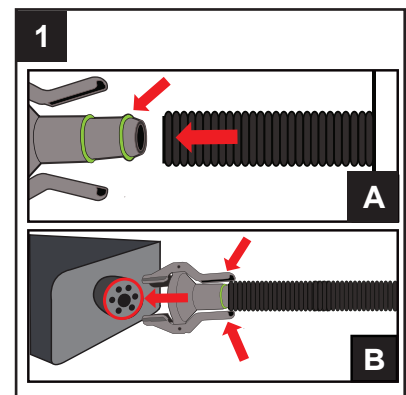
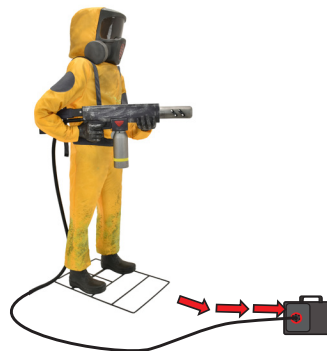
1. Your fog machine (400 or 1000 watt) can be used in conjunction with Alien Clean Up Prop™.
2. Do not use with any other fog machine.
3. FOG MACHINE IS NOT INCLUDED. MUST BE PURCHASED SEPARATELY.
4. Manufacturer does not guarantee the performance of the fog machine.
5. Make sure to use the supplied fog machine components when hooking up to the fog machine, or damage could occur.
6. MAKE SURE THE Alien Clean Up Prop™ IS SET TO THE OFF POSITION AND THAT YOUR FOG MACHINE IS TURNED OFF WHEN NOT IN USE.

FOG CLAMP - PATENT: <https://tekkydesign.com/pages/terms-conditions.php>

FOG MACHINE ASSEMBLY

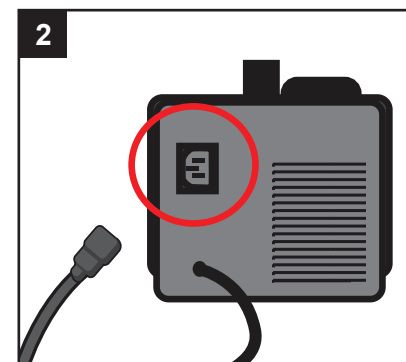
1. FOG HOSE will slide onto the FOG CLAMP and secure in place. (See Illustration A)

Depress the lever arms of the FOG CLAMP and attach to the fog machine nozzle. (See Illustration B)



2. Plug the FOG CORD into your fog machine. If the FOG CORD does not fit, see illustration 2a.

- 2a. Plug the FOG CORD into the FOG CORD ADAPTER. Plug FOG CORD ADAPTER into your fog machine.



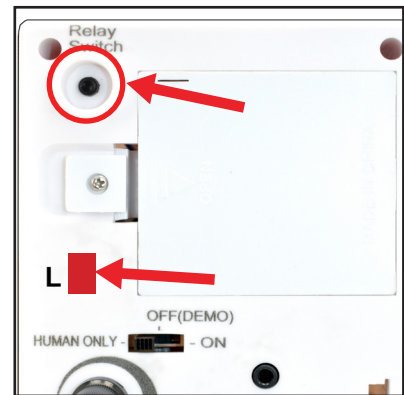
FOG MACHINE ASSEMBLY

3. Plug the other end of the FOG CORD into the jack labeled L on the CONTROL BOX. (Match L to L)

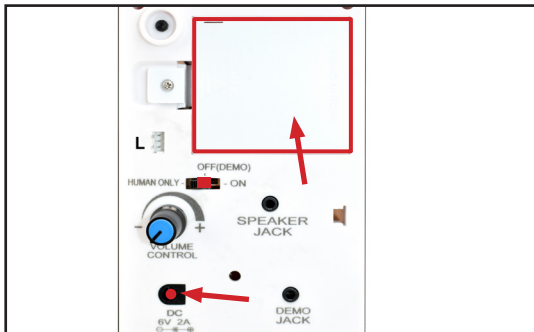
Make sure your fog machine is heated up properly, turn your fog machine ON, and then turn the Alien Clean Up Prop™ switch to the ON position.

Make a loud sound (clap) or move in front of the item to activate.

If no fog appears, press the Relay Switch on the CONTROL BOX.



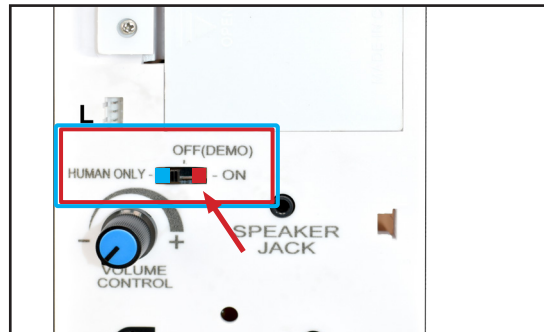
OPERATING INSTRUCTIONS



1. Insert 4 AA batteries (not included) into the battery compartment located on the CONTROL BOX.

OR

Insert a 6V 2A DC ADAPTER (included) into the CONTROL BOX.



2. Move the switch to the ON position (marked in red) and make a loud sound (clap), or move in front of the item to activate.

OR

Move the switch to the HUMAN ONLY position (marked in blue) to activate with motion only. Move the switch to the OFF(DEMO) position when not in use.

OPTIONAL FOOTPAD SETUP

OPTIONAL FOOTPAD SETUP

FOOTPAD IS NOT INCLUDED. MUST BE PURCHASED SEPARATELY.

1. Insert the cable from the optional footpad into the jack labeled DEMO JACK located on the CONTROL BOX.
2. Place the power switch to the OFF(DEMO) position to enable demo activation.
3. Step on the footpad to activate the scary sequence!

* Footpads are sold separately and can be purchased at www.tekkyaccessories.com.



OPTIONAL EXTERNAL SPEAKER SETUP

OPTIONAL EXTERNAL SPEAKER SETUP

EXTERNAL SPEAKER IS NOT INCLUDED. MUST BE PURCHASED SEPARATELY.

1. Plug the speaker cord into the jack labeled SPEAKER JACK on the CONTROL BOX.
2. Turn the VOLUME CONTROL knob on the CONTROL BOX to highest level and use external speaker knob to control the volume level.



OPTIONAL EXTERNAL SPEAKER SETUP

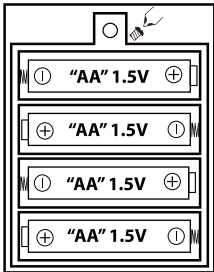
OPTIONAL EXTERNAL SPEAKER SETUP

EXTERNAL SPEAKER IS NOT INCLUDED. MUST BE PURCHASED SEPARATELY.

1. Plug the speaker cord into the jack labeled SPEAKER JACK on the CONTROL BOX.
2. Turn the VOLUME CONTROL knob on the CONTROL BOX to highest level and use external speaker knob to control the volume level.



Battery Diagram



BATTERY INSTRUCTIONS AND CAUTIONS

Battery installation and removal should be performed by an adult. Remove batteries when not in use. Use only batteries recommended in the instructions. Do not mix alkaline, carbon-zinc, nickel-cadmium, rechargeable or different types of batteries. Be mindful to insert batteries with the correct polarity (+/-) as indicated. Remove all exhausted batteries. Rechargeable batteries are only to be charged under adult supervision. Rechargeable batteries are to be removed from the item before being charged. Non-rechargeable batteries are not to be recharged. The supply terminals are not to be short-circuited. Always dispose of exhausted batteries properly. Do NOT dispose of batteries in fire, they may leak or explode.

Warning! This item is not a toy. For decoration only. Small parts, choking hazard. This product is intended for use by persons 15 years of age and older. Not intended for use by children ages 14 years and younger.

WARNING!
DO NOT TURN ITEM ON UNTIL YOU HAVE COMPLETELY FINISHED ASSEMBLY.
STAY CLEAR OF ITEM WHILE OPERATING.
DO NOT PLACE ITEM ON UNEVEN GROUND.
DO NOT PLACE WEIGHT ON ITEM WHILE IN OPERATION UNLESS ON METAL BASE.



Visit us at tekkydesign.com
Requires 4 AA batteries
(not included) or
6V 2A DC adapter (included).

ALL NEW MATERIAL ONLY:
METAL, PLASTIC, FABRIC,
POLYPROPYLENE FOAM.
Surface washable only.

Alien Clean Up Prop™
is a trademark of Tekky.
Copyright ©2025 Tekky.
All Rights Reserved.
FUN97799

MADE IN CHINA



DO NOT RETURN THIS ITEM TO THE STORE!
If experiencing technical difficulties, please go to
www.tekkydesign.com for assistance.



SMART PHONE SCAN
SETUP VIDEO

